

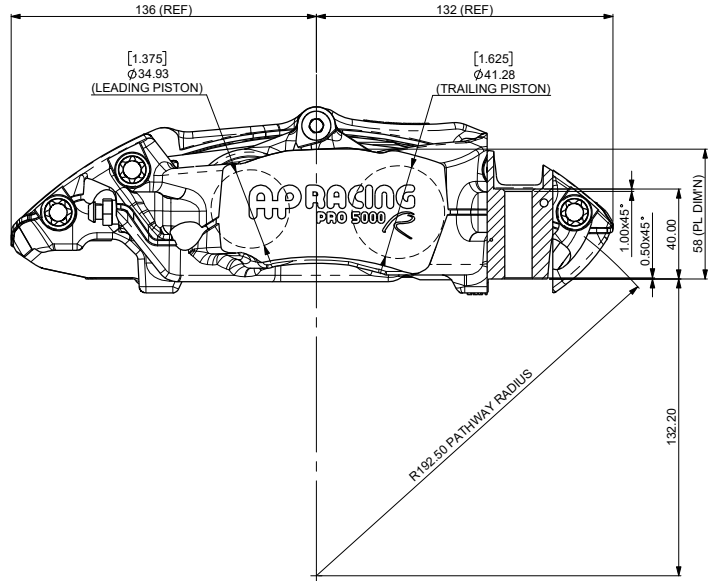
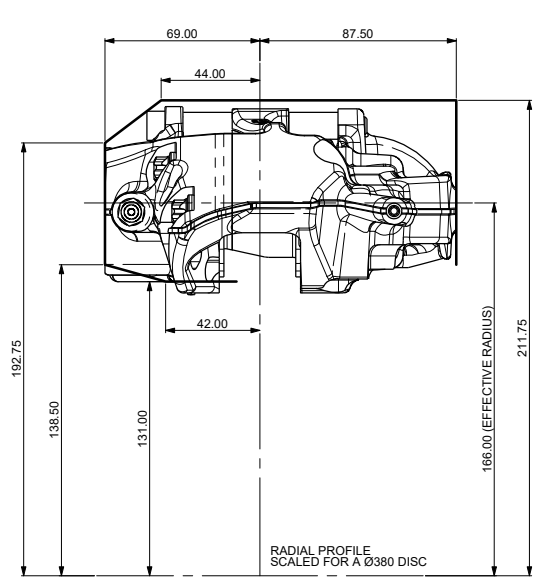
B1 ASSEMBLY DRAWING

IF THIS DOCUMENT IS PRINTED IN HARDCOPY, IT IS FOR INFORMATION USE ONLY AND THEREFORE IS NOT SUBJECT TO UPDATING CONTROLS. ALWAYS REFER TO SOLIDWORKS VIEWER FOR LATEST ISSUE

FIRST ANGLE PROJECTION

THIS DRAWING IS CONFIDENTIAL AND IS SUPPLIED ON THE EXPRESS CONDITION THAT IT SHALL NOT BE LOANED OR COPIED OR DISCLOSED TO ANY OTHER PERSON OR USED FOR ANY OTHER PURPOSE WITHOUT THE WRITTEN CONSENT OF AP RACING LTD.

AP RACING
 AP Racing
 Wheler Road
 Coventry
 CV3 4LB
 Tel: +44 024 7663 9595
 Fax: +44 024 7663 9559
 e-mail: sales@apracings.co.uk
 Web site: HTTP://www.apracings.com



GENERAL DESCRIPTION
 THIS 4 PISTON DIFFERENTIAL BORE CALIPER TO SUIT UP TO Ø380 IRON DISC WITH A THICKNESS OF 28-32mm.

APPLICATION
 GENERAL USE CALIPER.

TECHNICAL INFORMATION
 TOTAL PISTON AREA: 45.6cm²
 BODY MATERIAL: ALUMINIUM ALLOY
 PISTON MATERIAL: STAINLESS STEEL

ASSEMBLY WEIGHT (LESS PADS): 2.23Kg

MINIMUM DISC & PAD STACK: 40MM

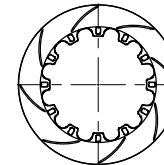
INSTALLATION INFORMATION
 DISC & CALIPER MOUNTING TOLERANCES TO BE SUCH THAT THE DISC IS CENTRAL TO THE CALIPER TO WITHIN ±0.5mm. DISC DIAMETRAL CLEARANCE SHOULD BE 2.5mm NOMINAL FROM DISC Q/D TO PATHWAY.

KEY TO DIMENSIONS
 'PL' DIMN : TOP OF PAD MATERIAL TO MOUNTING FACE.
 'U' DIMN : WHEEL CENTRE LINE TO CALIPER MOUNTING FACE = (DISC Ø/2) - PL DIMN

AP RACING TECHNICAL SECTION WILL BE PLEASED TO ADVISE ON THE MOST SUITABLE EQUIPMENT FOR ANY PARTICULAR APPLICATION.

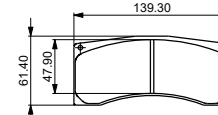
CALIPER PART NUMBERS
 CP9446-2S4L - RIGHT HAND
 CP9446-3S4L - LEFT HAND

RECOMMENDED DISC AND PAD OPTIONS AVAILABLE
 D48 DISC AND PAD COMBINATION



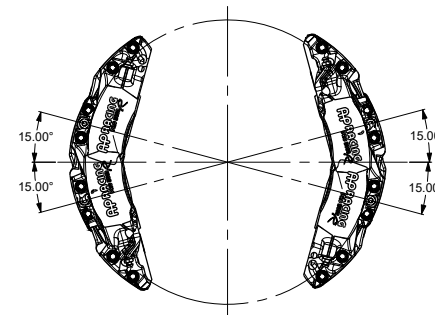
CP5772-1128/9GA Ø356x32 12F 72V 5.98Kg

SEE CUSTOMER DRAWING FOR FULL DETAIL



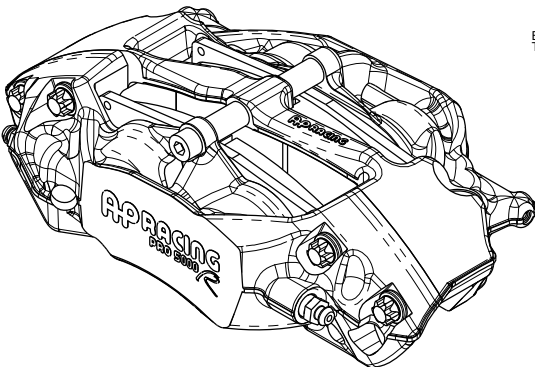
CP6820D48 PAD FAMILY
 PAD THICKNESS - 16mm
 PAD AREA - 63.20cm²
 PAD VOLUME - 101.12cm³

OPTIMUM BLEED POSITIONING
 FOR OPTIMUM BLEED, THE CALIPER SHOULD BE INSTALLED IN THE LEADING OR TRAILING POSITION BETWEEN THE ANGLES SHOWN



BLEED SCREW TIGHTENING TORQUE 17.0 Nm (12.5 Lbs ft)

PAD RETAINING BOLT SHOULD BE TIGHTENED TO A TORQUE OF 19Nm (14lb ft)



| REV | Alterations | | | Zone | Initials |
|-----|------------------------|--|---|------|------------|
| | Date & No. | Particulars | # | | |
| 1A | 16/06/16 87479 | FIRST ISSUE | | | NJS |
| 1B | 17/07/2017 87726_01 | CHANGED TORQUE SPECIFICATION NOTE | | | SGW |
| 1C | 25/08/24 RAC23531 | SHEET 2 AKS SPRINGS ADDED TO SPARES TABLE AND MODEL | | | K10 HMB |

| | |
|--|--------------|
| SCALE 1:1 | SHEET 1 OF 2 |
| DRAWN N STEVENS | |
| APPROVED | |
| DERIVED FROM | |
| TITLE 4 POT PRO5000 R CALIPER INSTALLATION | |
| DRG NO. CP9446-1CD | |

B1 ASSEMBLY DRAWING

IF THIS DOCUMENT IS PRINTED IN HARDCOPY, IT IS FOR INFORMATION USE ONLY AND THEREFORE IS NOT SUBJECT TO UPDATING CONTROLS. ALWAYS REFER TO SOLIDWORKS VIEWER FOR LATEST ISSUE

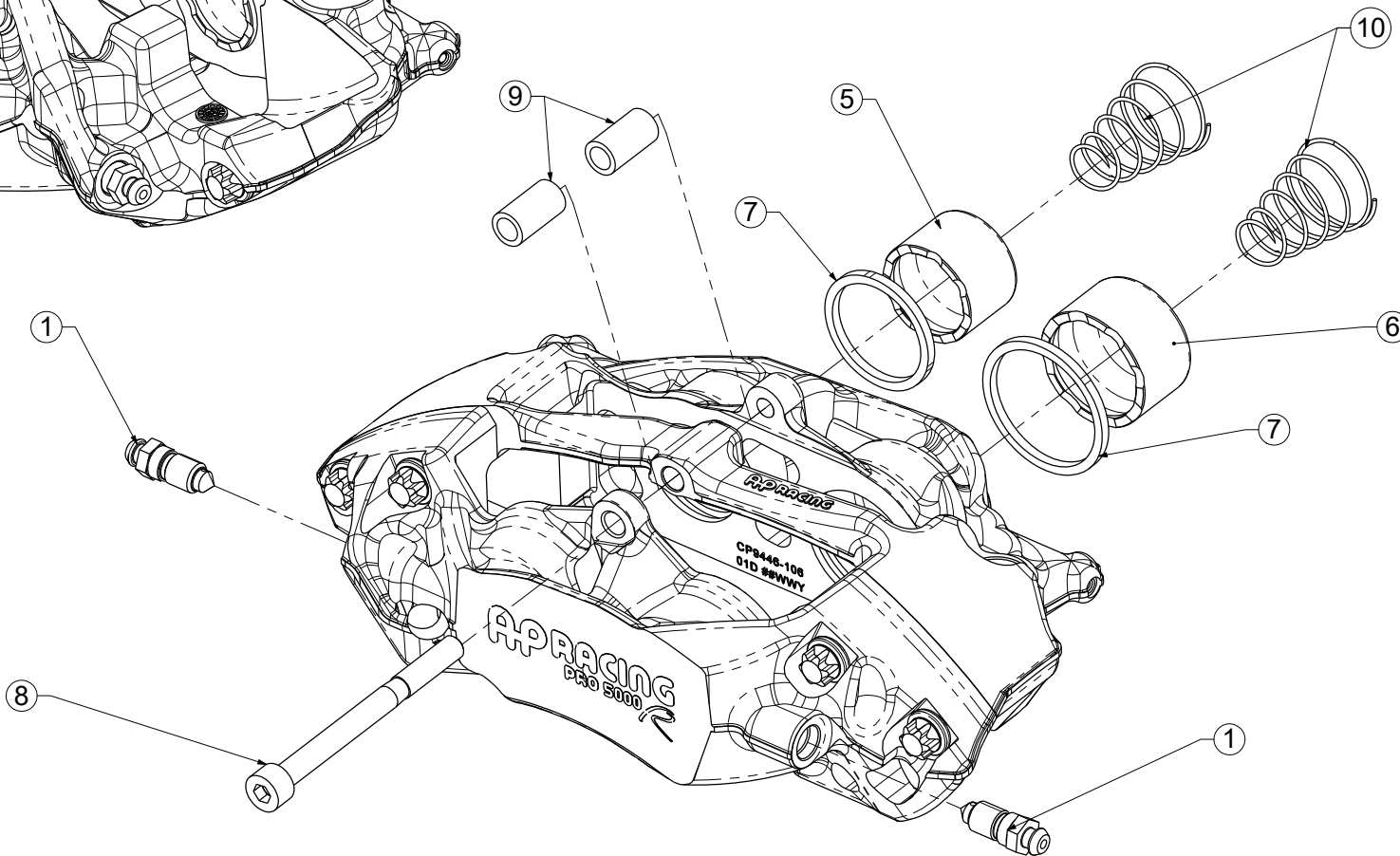
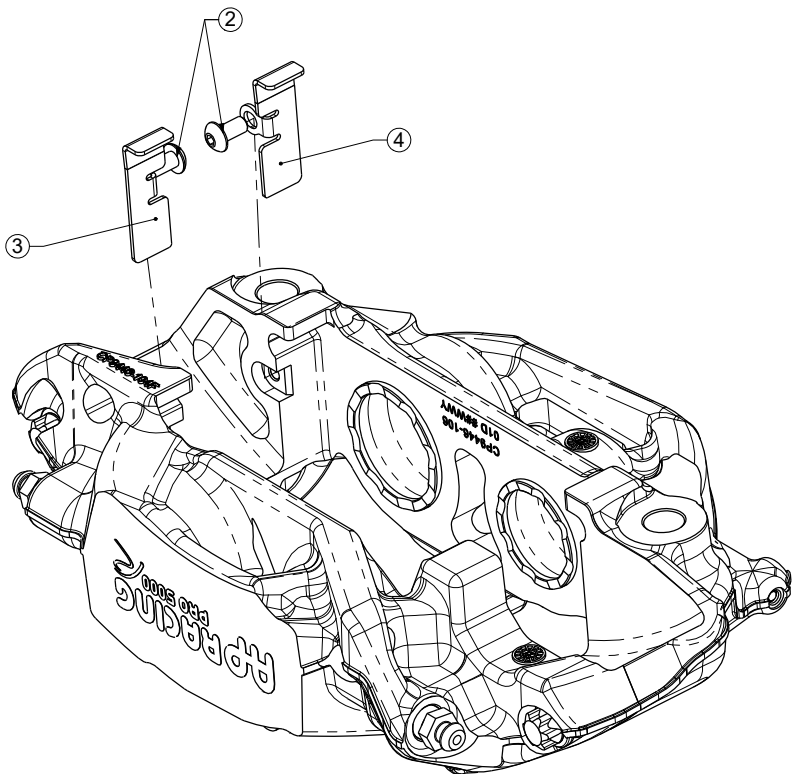
FIRST ANGLE PROJECTION

THIS DRAWING IS CONFIDENTIAL AND IS SUPPLIED ON THE EXPRESS CONDITION THAT IT SHALL NOT BE LOANED OR COPIED OR DISCLOSED TO ANY OTHER PERSON OR USED FOR ANY OTHER PURPOSE WITHOUT THE WRITTEN CONSENT OF AP RACING LTD.



AP Racing
Wheler Road
Coventry
CV3 4LB
Tel: +44 024 7663 9595
Fax: +44 024 7663 9559
e-mail: sales@apracings.co.uk
Web site: HTTP://www.apracings.com

| REF | PART NUMBER | DESCRIPTION | QTY / CALIPER | FITTING NOTES |
|-----|--------------|---------------------|---------------|--|
| 1 | CP3880-1 | M10 BLEED SCREW KIT | 2 | TIGHTENING TORQUE - 17Nm |
| 2 | CP9440-116 | M5 BUTTON SCREW | 2 | APPLY A 1-2MM DROP OF LOCTITE 270 TO THE 2ND FROM LAST THREAD WHEN FITTING. TIGHTENING TORQUE - 3.7Nm |
| 3 | CP9446-110 | RH WEARPLATE | 1 | APPLY 736 RTV SILICONE SPARINGLY BEHIND THE ABUTMENT PLATE ENSURING ENTIRE CONTACT FACE IS COVERED. APPLY PRESSURE TO ABUTMENT PLATE WHEN FITTING TO ENSURE MINIMUM FILM THICKNESS AND AVOID ANY GAP. |
| 4 | CP9446-111 | LH WEARPLATE | | ENSURE ABUTMENT PLATE SITS CORRECTLY AGAINST CALIPER BODY BEFORE FITTING RETAINING SCREW. |
| 5 | CP9444-110 | Ø1 3/8" SST PISTON | 2 | |
| 6 | CP9444-111 | Ø1 5/8" SST PISTON | 2 | |
| 7 | CP8518-GK | PISTON SEAL KIT | 1 | REFER TO PUBLICATION REF: P14.290 & P14.220 |
| 8 | CP3596-112ST | M8 CAP SCREW | 1 | TIGHTENING TORQUE - 13.1Nm |
| 9 | CP9440-110 | PAD RETAINER TUBE | 2 | |
| 10 | CP6518-4LBLL | 4lb AKB SPRING KIT | 1 | |



| REV | Alterations | | |
|-----|-------------|------------------------------------|------|
| | Date & No. | Particulars | Zone |
| 1 | | SEE SHEET 1 FOR ISSUE INFORMATION. | |

| | |
|-----------------|--------------|
| SCALE 1.5:1 | SHEET 2 OF 2 |
| DRAWN N STEVENS | |
| APPROVED | |
| DERIVED FROM | |
| TITLE | |
| DRG NO. | CP9446-1CD |